

Quick Installation Guide

Read Before Operating

Ambient Temperature

Temperature range depends on the purchased model. For detail information, please refer to product datasheet.

- 1. Standard Operating Temperature Model: -10°C~65°C or -10°C~70°C or -40°C~60°C or -40~65°C
- 2. Extended Operating Temperature Model: -40°C~75°C or -40°C~80°C

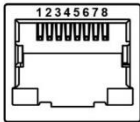
Power Supply

Suggest using UL listed industrial power supply.

Ethernet Ports

RJ-45 Ports (Auto MDI/MDIX)

The RJ-45 ports are auto-sensing for 10Base-T, 100Base-TX or 1000Base-T devices connections. Auto MDI/MDIX means that the switch can connect to another switch or workstation without changing the straight-through or crossover cabling.

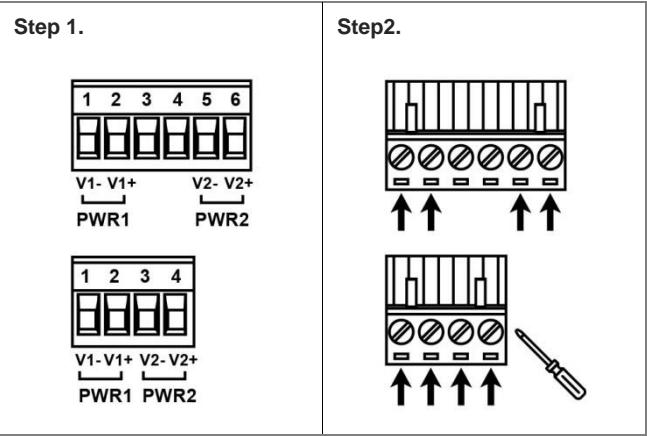


RJ45 Ethernet Port Pin Outs						
Pin	T568A Color	T568B Color	10Base-T, 100Base-TX	1000 Base-T(X)	PoE+	bt PoE
1	white/green stripe	white/orange stripe	Rx+	TP0+	DC+	DC-
2	green solid	orange solid	Rx-	TP0-	DC+	DC-
3	white/orange stripe	white/green stripe	Tx+	TP1+	DC-	DC+
4	blue solid	blue solid	unused	TP2+		DC+
5	white/blue stripe	white/blue stripe	unused	TP2-		DC+
6	orange solid	green solid	Tx-	TP1-	DC-	DC+
7	white/brown stripe	white/brown stripe	unused	TP3+		DC-
8	brown solid	brown solid	unused	TP3-		DC-

Wiring the Power Inputs

Please follow the below steps to insert the power wire.

- Step 1.** Insert the positive and negative wires into the PWR1(V1+, V1-) and PWR2(V2+, V2-) contacts on the terminal block connector.
- Step 2.** Tighten the wire-clamp screws to prevent the wires from loosening



Note:

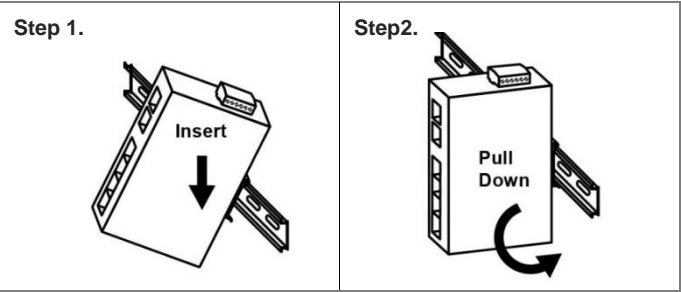
- 1. Only use copper conductors, 125°C, tighten to 7 lbs.
- 2. The wire gauge for the terminal block should range between 18~20 AWG.

Mounting Installation

1. DIN-Rail Mounting

Follow the steps below to mount the industrial Ethernet switch using the pre-installed DIN-Rail bracket:

- Step 1.** Insert the top of the DIN-Rail on to the track.
- Step 2.** Lightly pull down the bracket on to the rail.
- Step 3.** Check if the bracket is mounted tightly on the rail.
- Step 4.** To remove the industrial Ethernet switch from the rail, perform Steps 1~3 in reverse.



Wall Mounting

Follow the steps below to mount the industrial Ethernet switch using the wall mounting bracket:

- Step 1.** Remove the DIN-Rail bracket from the industrial Ethernet switch by loosening the screws.
- Step 2.** Place the wall mounting brackets on the top and bottom, and use the screws to screw the wall mounting bracket onto the industrial Ethernet switch.
- Step 3.** Use the hook holes at the corners of the wall mounting bracket to hang the industrial Ethernet switch on the wall.

